



ART BASEL

13-18 JUNE 2023

Booth P10

William Anastasi
Zbynek Baladran
Diego Bianchi
Katinka Bock
Miriam Cahn
Harald Klingelhöller
Irene Kopelman
Isa Melsheimer
Santiago de Paoli
Prinz Gholam
Elodie Seguin
Francisco Tropa
Franz Erhard Walther
Christoph Weber

Galerie Jocelyn Wolff

Galerie Jocelyn Wolff | 43 rue de la Commune de Paris | 93230 Romainville | Tuesday to Saturday 10 am - 6 pm | +33 1 42 03 05 65 | www.galeriewolff.com

For this year at Art Basel, we will show a mindfully curated selection of works by the gallery's artists.

The choice of works is in line with the gallery's ongoing program, which is based on an ambition to help build a dialogue between emerging artists and those who have already made a significant contribution to the contemporary art world. It will illustrate the core idea of the gallery program : the circulation between registers, genres, works and aesthetics, in a constant preoccupation for visual language renewal, this material, that we try to make move.

The program will be articulate around our artist's personal research and reflections, including one of the most recent and major pieces by **Santiago de Paoli**, that echoes with the corporeality of **Miriam Cahn's** painting, and a selection of **Katinka Bock's** photographs that attests of the intimate and sculptural view of the artist upon bodies and objects, in dialogue with a large-scale contact print by **Christoph Weber**.

Two sculptures of **Francisco Tropa** will be shown for the first time, while the artist presents a solo exhibition at Cahn Kunstraum, Basel, opening during the fair.

And some recent works by **Elodie Seguin**, **Isa Melsheimer**, **Irene Kopelman** and **Prinz Gholam**, **Zbynek Baladran** and **Diego Bianchi**, questioning their environment on a visual, organic or social level, will be in conversation with some historical sculptures in suspension by artists **William Anastasi**, **Harald Klingelhöller** and **Franz Erhard Walther**, and will create a dialogue with formal language and sculptural experimentations.

Opening Hours:

Tuesday 13 June and Wednesday 14 June 2023 (by invitation)
11am to 8pm

Thursday 15 June to Sunday 18 June 2023 (public days)
11am to 7pm

[Preview upon request > info@galeriewolff.com](mailto:info@galeriewolff.com)

Galerie Jocelyn Wolff

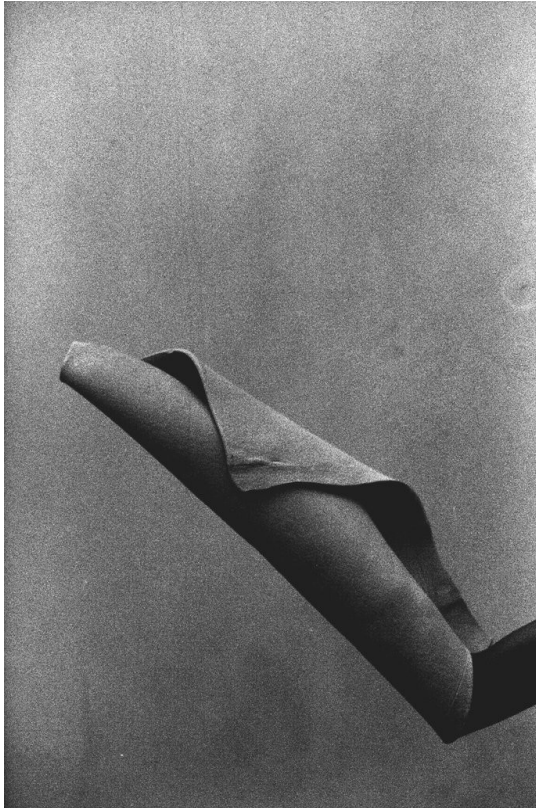


Santiago de Paoli, *Going up*, 2022, oil on copper, polytych, 6 elements, overall : approx. 152.5 x 305 cm



Miriam Cahn, *hand-+fussgefühl*, 1.12.21 2021, oil on canvas, signed and dated on the back 120 x 160 cm

Galerie Jocelyn Wolff



Katinka Bock, *Zarba Lonsa, 1*, 2015, 37 x 24.5 cm framed, ed. 1/4 + 2 A.P.



Katinka Bock, *For Your Eyes Only (S)*, 2016, 37 x 24.5 cm framed, ed. 1/4 + 2 A.P.



Prinz Gholam, *PG Monogatari (public garden)*, 2021, 50 x 70 cm

Galerie Jocelyn Wolff



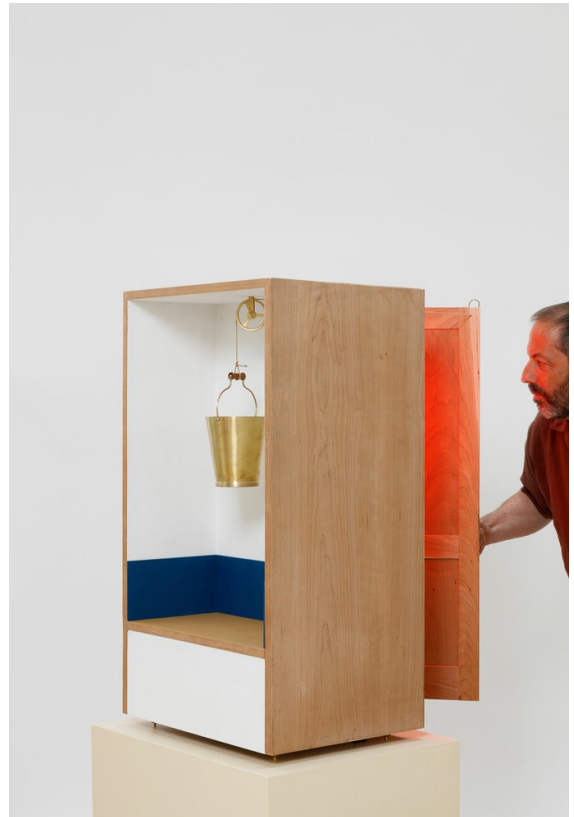
Franz Erhard Walther, *Yellow Wedges*, 1980 - 1981,
24 elements, all different sizes



Harald Klingelhöller, *Wenden sich den Bildern zu*,
Turning to the Images, 1997



William Anastasi, *Pulley*, 1964, 135 x 50 x 50 cm,
unique + 1 A.P.



Francisco Tropa, *Che vuoi ?*, 2023, 162.5 x 60.5 x
50 cm, ed. 1 + 1 A.P.

Galerie Jocelyn Wolff

OUTDOORS PROGRAM
DURING ART BASEL 2023

FRANCISCO TROPA

The RM Enigma

Curated by Luiza Teixeira de Freitas / Jean-David Cahn

CAHN KUNSTRAUM, Basel

13 - 30 June 2023

Opening 12 June, 6 pm to 9:30 pm

This exhibition is part of a significant series of projects involving the Galerie Jocelyn Wolff and the Cahn Gallery, with each project exploring the complex relationship between contemporary art and archaeology.

The aim of these confrontations and dialogues is to refresh our gaze, for audiences who have followed the history of art over the past few decades, the mysterious aura of archaeological objects enables striking re-readings and mises en abyme, the same is true for the enlightened archaeology enthusiast, who will see in contemporary creations objects that are difficult to apprehend, in their involuntary esotericism. To continue the 2022 exercise, with a fascinating contribution by Katinka Bock, itself a continuation of an earlier reflection (Laura Lamiel, in collaboration with the Galerie Marcelle Alix), we asked Francisco Tropa to come and exhibit his most recent work at the Cahn Kunstrraum.

Since Francisco Tropa's work emerges from the dialectical respiration between the traditional materials of sculpture (bronze, stone, etc.) and the classical devices of Western art (trompe-l'oeil, composition) on the one hand, and on the other, contributions from conceptual art or the use of techniques that blur the status of the object in the field of sculpture - the direct projection of objects, for example, transforms them into images rather than shadows - it is possible that here we reach the paroxysm in this dialogue between archaeology and contemporary art.

But it is also possible that having passed the tipping point, this confrontation reverts here to a natural simplicity, a harmonious, more literary relationship, with the emergence of new metaphors.

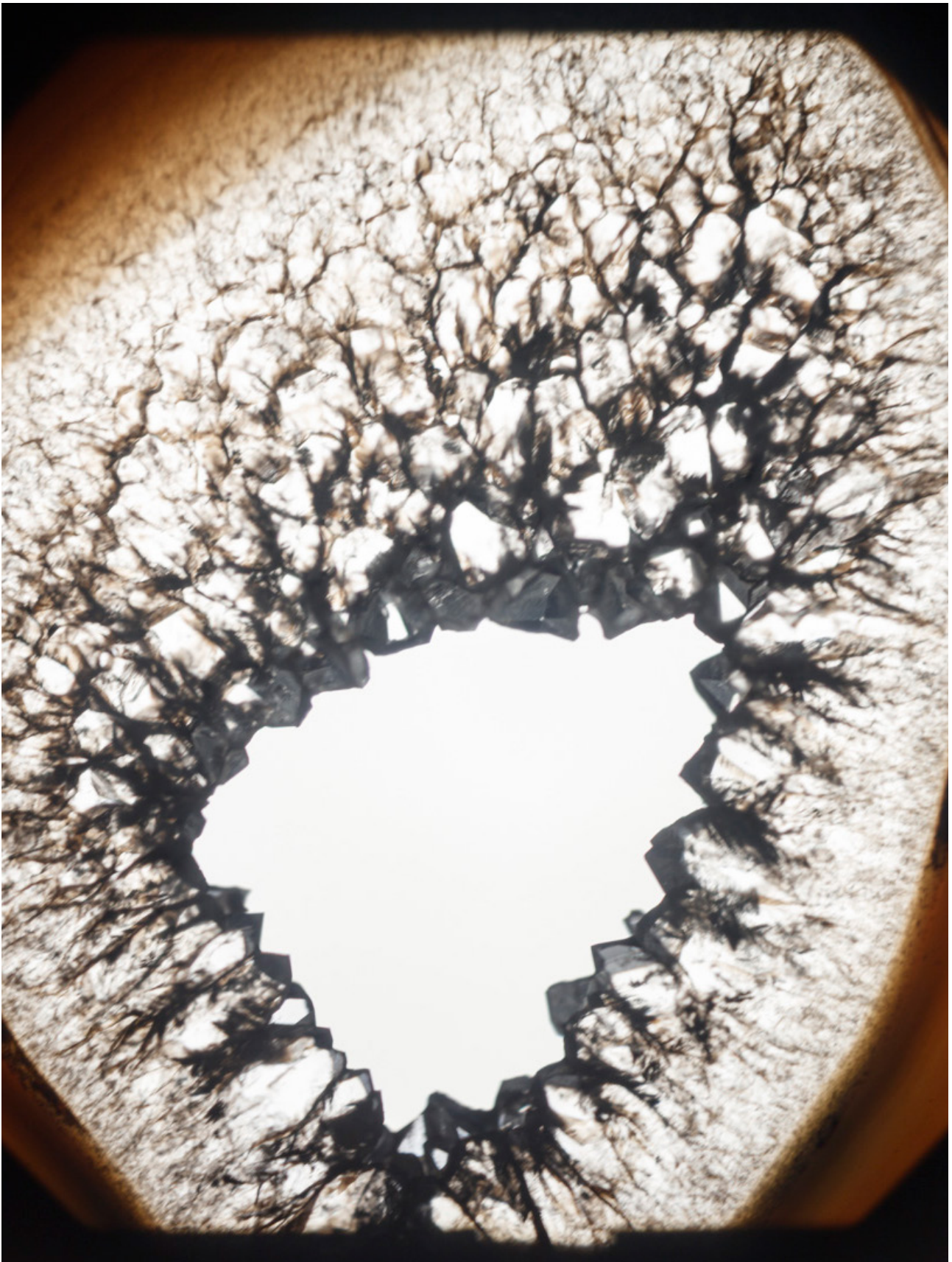
› **to visit**

Steinentorstrasse 19, 4051 Basel, Switzerland

Opening hours during Art Basel: 13-14 June 11am - 9pm / 15-18 June 11am - 6pm

Opening hours from 20-30 June: Tue-Sat 2pm - 6pm

Galerie Jocelyn Wolff



Francisco Tropa, *Agate*, detail, inkjet print on paper mounted on aluminium, 75 x 75 cm framed, ed 1/5, 2023, courtesy of the artist and Galerie Jocelyn Wolff.

Galerie Jocelyn Wolff

Galerie Jocelyn Wolff | 43 rue de la Commune de Paris | 93230 Romainville | Tuesday to Saturday 10 am - 6 pm | +33 1 42 03 05 65 | www.galeriewolff.com

Contact & Information

For press enquiries, images, interviews and additional information :

Ana Bordenave

a.bordenave@galeriewolff.com

info@galeriewolff.com

www.galeriewolff.com



Galerie Jocelyn Wolff